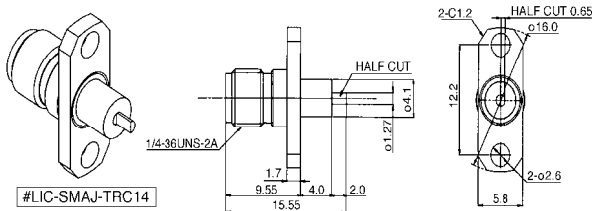


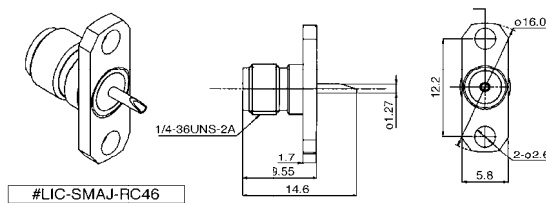
SNAP-ON SMA JACK

MEET TO ALL SMA PLUGS

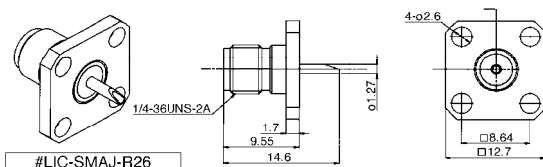
PAT. PENDING



P/N RTM-SMAJ-TRC14(ex #LIC-SMAJ-TRC14)



P/N RTM-SMAJ-RC46(ex #LIC-SMAJ-RC46)



P/N RTM-SMAJ-R26(ex #LIC-SMAJ-R26)

- * Work as **SNAP-ON** with SNAP-ON PLUG
- * High Productivity
- * Connecting Without Hand-Tool
- * Long Life: Over 1,000 Mates
- * SNAP-ON JACK with SNAP-ON PLUG will hold torque approx 3Kg/6.6LB.
- * Standard: MIL C39012 JIS C5410
- * Work as Regular Jack with Regular type standard SMA PLUG.

Specification	
Freq. Range:	DC ~ 12.4GHz
Impedance:	50 OHM
Standard:	MIL C39012 JIS C5410
Rated Voltage:	AC335V
Resistance:	>1,000Mega Ohms at DC500V
V.S.W.R.:	1.2 MAX(DC~12.4GHz)

Types Available	
Panel Mount	RTM-SMAJ-TRC14, RTM-SMAJ-RC46, 2 Holes
Panel Mount	RTM-SMAJ-R26, 4 Holes

Material:	
Shell:	Brass(Nickel)
Center Contact:	Beryllium(Gold) Solder Cup Type
Dielectric:	Teflon

Improve Productivity! Cost Saving

**Other Products
Custom RF Connectors, Custom Surge-Protectors**

RF TEC Mfg., Inc.
256 Commerce Dr. Suite 517, Peachtree City, GA 30266
Tel: 770-487-2187 Fax: 770-486-9499
e-mail: info@rftec.com URL: http://www.rftec.com