

NJ - NJ
RTM-LSP559 -
Loss: ~ 7 GHz

WILTRON

360 NETWORK ANALYZER

MODEL:
DEVICE ID:

DATE:
OPERATOR:

Page 1

SWEEP DATA

START: 0.0400 GHz
STOP: 7.0600 GHz
STEP: 36.0 MHz

GATE START: -
GATE STOP: -
GATE: -
WINDOW: -

ERROR CORR: FREQ RESP
AVERAGING: 1 PTS
IF BNDWDTH: REDUCED

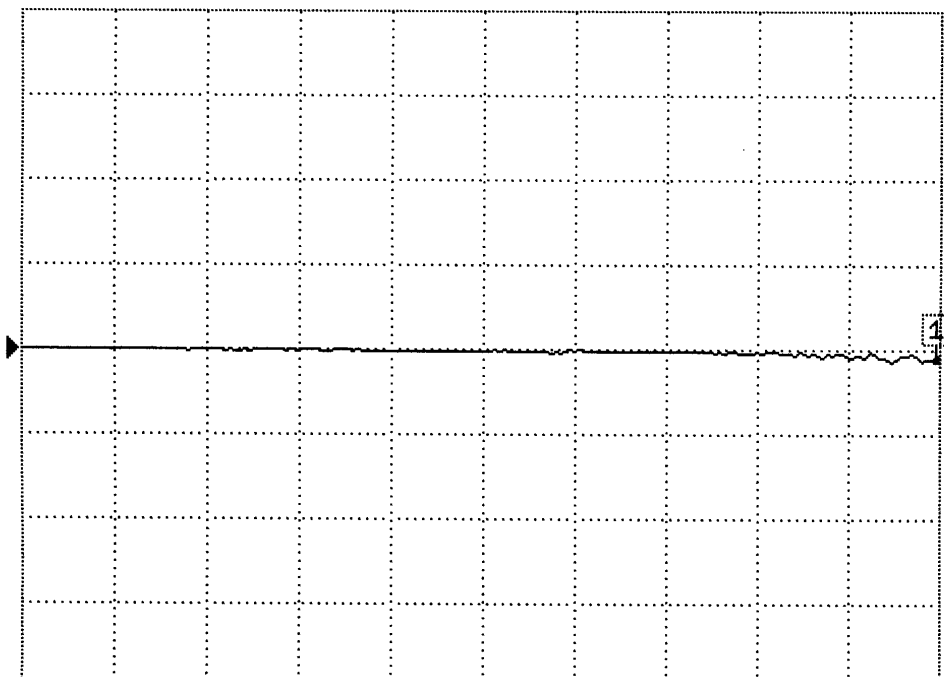
-----CH1-----
S-PARAMETER: S21
NORMALIZATION: OFF
REF DELAY: 0.000 ps
SMOOTHING: 0.0 PERCENT
DELAY APERTURE: -

S21 FORWARD TRANSMISSION

LOG MAG.

REF=0.000dB

10.000dB/DIV



CH 1 - S21
0.000 PS

MARKER 1
7.0240 GHz
-1.072 dB

MARKER TO
MARKER TO